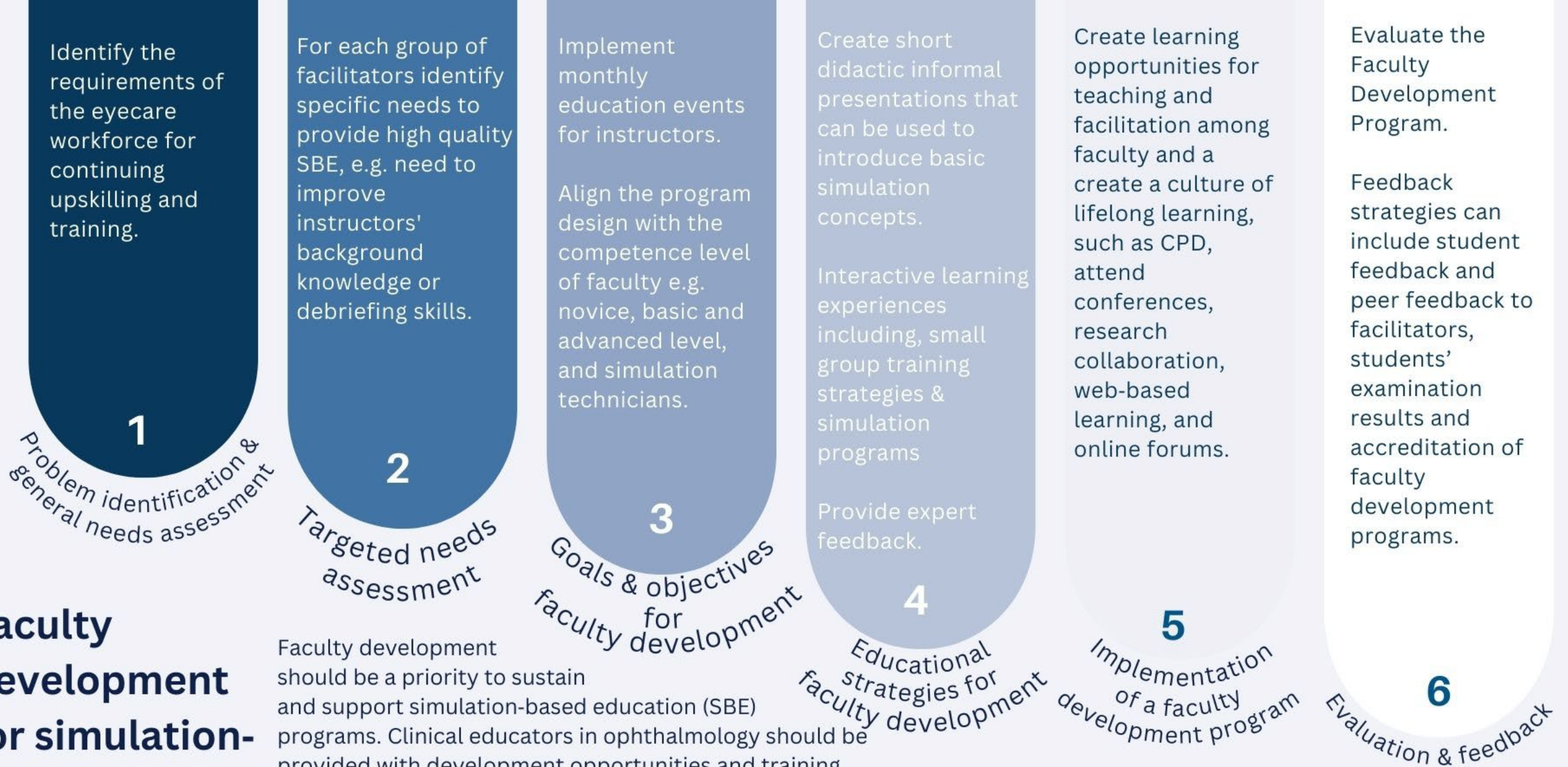


# Faculty development for simulation-based education in ophthalmology



Faculty development should be a priority to sustain and support simulation-based education (SBE) programs. Clinical educators in ophthalmology should be provided with development opportunities and training in simulation-based education. Facilitators may have different levels of simulation knowledge and experience; therefore, training programs should accommodate novice, basic-level, and advanced-levels for educators, as well as training for technicians.



Labuschagne, Mathys; Lansingh, Van1; Thomsen, Ann Sofia Skou2; Grau, Arturo3; Luciano, Andreas Di4; Clements, John5; Musa, Pablo3; Ng, Danny Siu-Chun6; Filipe, Helena Prior7. Good practices in simulation-based education in ophthalmology – A thematic series. An initiative of the Simulation Subcommittee of the Ophthalmology Foundation Part II: Faculty development for simulation-based education in ophthalmology. The Pan-American Journal of Ophthalmology 5(1):38, October 2023. | DOI: 10.4103/pajo.pajo\_75\_23  
Acknowledgement for graphic: I du Preez